

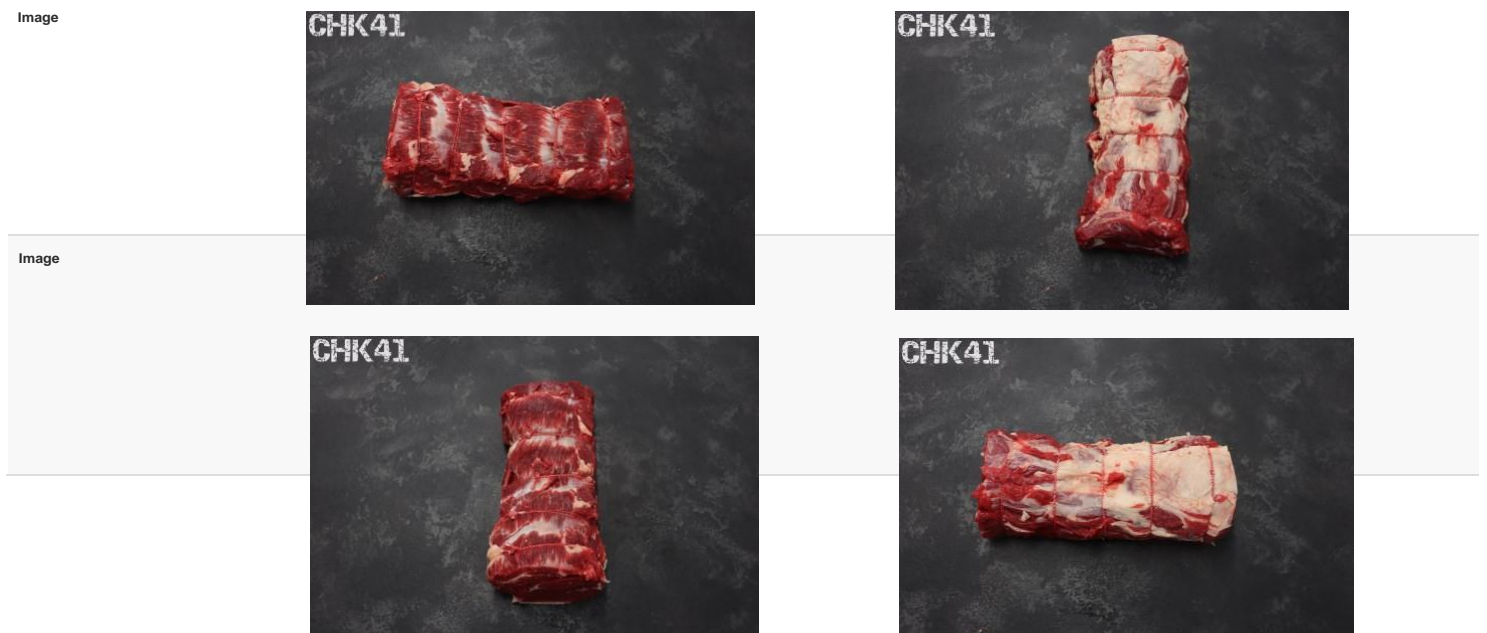
Beef, Lamb & Pork specification



Product	AITACHK41A22 - CUORE DI REALE - SPENCER ROLL ANGUS IRL
Version	1 (19/01/2023)
Product Type	Beef
Primary Specification	CHK41 - Chuck eye - tied

Specification Details

Species	Beef
Spec Type	Secondary
Product Input	
Product Range	Angus
Product State	FRESH
NLAF ID	1003848
Origin	Irish
Quality Grade	A
Kepak Responsible Site	Kepak Clonee
Kepak Sites Approved for Production	Kepak Clonee, Kepak Cork, Kepak Longford
Customer	ITALIAN GENERIC
Butchery Description	Chuck eye- neck off, Squared at both ends, Heavy fat and gristle removed, Tied.
Key Quality Checks	Chuck eye- neck off, Squared at both ends, Heavy fat and gristle removed, Tied. NO NECK, NO LEAN / FLOPPY BEEF, NO DARK/HIGH PH, NO KNIFE MARKS, BOTH ENDS HAVE TO HAVE SIMILAR DIAMETER. NO YELLOW FAT. MARBLE SELECTED MIN 3+
Eligibility Category	MPQAS



Label	
GTIN	95391543552483
Customer product code	AITACHK41A25
Product description 1	CUORE DI REALE SPENCER ROLL ANGUS IRL
Product description 2	CARNE DI BOVINO ADULTO REFRIGERATA
Product description 3	MARBLE FAT SELECTED ANGUS CHUCK EYE ROLL
Product Weights and Yields	
Weights	
Primal weight	Min: 2.200 kg Target: 2.600 kg Max: 3.000 kg
Box/Tray Fixed Weight	No
Box/Tray Weight	Min: 8.800 kg Target: 10.400 kg Max: 12.000 kg
Label Tare	0.58 g
Base Tare	0.38 g
Packaging	
Packaging Weights	
Pieces Per Pack	Min: 1 Target: 1 Max: 1
Packs Per Case	Min: 4 Target: 4 Max: 4
Pallet Type	Tray/Pallet - Euro Pallet 800 x 1200 (stamped) (IRE)
Palletizing Spec	4PCS PER ANGUS HALF BOX. 64 CS PER EPAL STAMPED
Bag Type	Vac Pac Bag - 350x550 Angus Scatterprint (IRE)
Base/Tray Type	Box - 1/2 size Vac Pac Base (IRE)
Lid Type	Box - Angus Black 1/2 Lid (New) (IRE)
Product Labelling	
Unit Label Quantity	1
Case Label Quantity	1
IPP Label	Yes
Label Date Requirements	
Kill to Debone Period	Min: 2 days Max: 7 days
Use By	60 days
From	Kill
Minimum shelf life on delivery - Days	28 days