
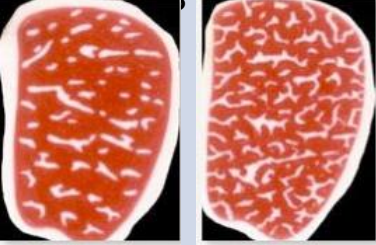





ITOWAGYU	Striploin	Faux Fillet	Dunne Lende	Roastbeef
<p>Spec:</p> 	<p>Striploin, split in 5 equal pieces.</p> <p>Chilled, keep at 0°C to 4°C. One per vac/bag. Approx 2,5 kg per vac/bag. Expiry: minimum 35 days left upon delivery in Europe.</p>	<p>Faux filet, coupé en 5 pièces égales .</p> <p>Frais, tenir entre 0°C et +4°C. 1 par sous/vidé. +/- 2,5 kg par sous/vidé. DLC: minimum 35 jours de DLC lors livraison en Europe.</p>	<p>Dunne lende, in 5 gelijke stukken verdeeld.</p> <p>Vers, bewaren bij 0°C tot +4°C. 1 per vacuumzak. +/- 2,5 kg per vacuum verpakking. THT: minimum 35dagen houdbaarheid bij levering in Europa.</p>	<p>Roastbeef, in 5 gleiche Stücke geschnitten.</p> <p>Frisch, aufbewahren bei 0°C bis +4°C. 1 per vakuum Beutel. +/- 2,5 kg pro Beutel. MHD: minimum 35 Tage MHD bei Lieferung in Europe.</p>
<p>Marbling Score:</p> 	<p>5 vac/bags per carton. Average carton weight: 11 kg. half "HEAD" per carton</p> <p>Born in : Japan. Reared in : Japan. Slaughtered in : Japan. Processed in: Japan. SANKYO K2 Kagoshima prefecture</p>	<p>5 sacs sous/vidé par carton. Poids moyen par carton: 11 kg. demi CCS par carton.</p> <p>Né en : Japon. Élevé en : Japon Abattu en : Japon Elaboré en: Japon SANKYO K2 Kagoshima prefecture</p>	<p>5 vac/packs per carton. Gemiddeld cartongewicht: 11 kg. half karkasequivalent per carton.</p> <p>Geboren in : Japan Gekweekt in : Japan Geslacht in : Japan. Versneden in: Japan SANKYO K2 Kagoshima prefecture</p>	<p>5 vac/beutel pro Karton. Durchschnittl. Kartongewicht: 11 kg. halb CCS equiv. pro Karton.</p> <p>Geboren in : Japan. Aufgewachsen in : Japan. Geschlachtet in : Japan. Zerlegt in: Japan. SANKYO K2 Kagoshima prefecture</p>
				

Energie/Energy(Kcal)	498
Energie/Energy(KJ)	2084
acides gras satures/saturated(g)	26,17
Glucides/Carbohydrates(g)	0,3
Proteines/Protein(g)	11,7
Sel/Salt	0,1



No. 1



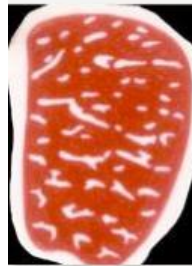
No. 2



No. 3



No. 4



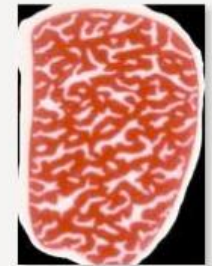
No. 5



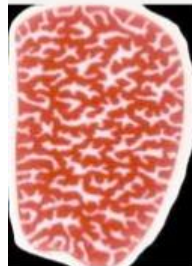
No. 6



No. 7



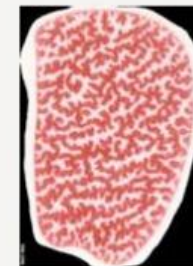
No. 8



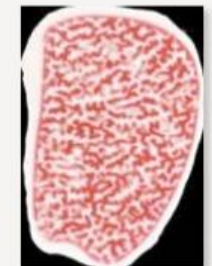
No. 9



No. 10



No. 11



No. 12