

Beef and Lamb specification



Product	R00436EXF - Lamb Oyster Shoulder
Version	1 (07/01/2021)
Product Type	Lamb
Primary Specification	LAMBFQ_05 - Bone in Oyster Shoulder

Specification Details

Species	Lamb
---------	------

Spec Type	Secondary
-----------	-----------

Product Input

Product Range	Generic
---------------	---------

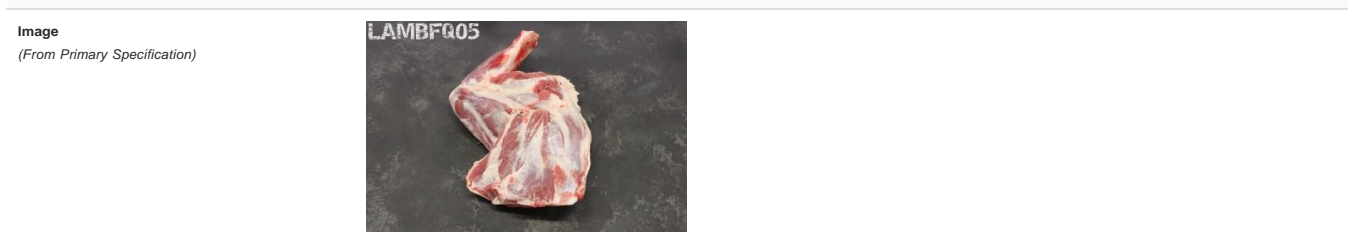
Product State	FRESH
---------------	-------

PLU Type	PRIMARY
----------	---------

Origin	British
--------	---------

Butchery Description <i>(From Primary Specification)</i>	Oyster shoulder is removed from commercial fq. Knuckle tip removed. Light trim of fat ,dried blood.
---	---

Eligibility Category	Red Tractor
----------------------	-------------



Label

Label	
-------	--

Product description 1	British Lamb Oyster Shoulder
-----------------------	------------------------------

Product description 2	RTA
-----------------------	-----

Product Weights and Yields

Weights

Primal weight	Min: 1.5 kg Max: 1.8 kg
---------------	-------------------------

Box/Tray Fixed Weight	No
-----------------------	----

Box/Tray Weight	Min: 12 kg Max: 14.4 kg
-----------------	-------------------------

Packaging

Packaging Weights

Pieces Per Pack	Min: 1 Target: 1 Max: 1
-----------------	-------------------------

Packs Per Case	Min: 8 Target: 8 Max: 8
----------------	-------------------------

Pallet Type	Tray/Pallet - Standard Pallet 1200 x 1000 Heat Treated
-------------	--

Bag Type	250X500 BB3050U EC LOGO (UK)
----------	------------------------------

Base/Tray Type	FULL EURO BE Bases 1000077802 (UK)
----------------	------------------------------------

Lid Type	FULL EURO B Lid - THE TRADITIONAL BUTCHER 1000077811 (UK)
----------	---

Product Labelling	
-------------------	--

Unit Label Quantity	8
---------------------	---

Case Label Quantity 1

Label Date Requirements

Kill to Debone Period Min: 1 days Max: 5 days

Use By 36 days

From Kill

